

SLABBINCK®

IN SERVICE OF LITURGY SINCE 1903



A T E L I E R SLABBINCK®

The origins of Atelier Slabbincx date back to 1903, the year Hendrik Slabbincx, skilled gold embroiderer, started his workshop in Bruges Belgium.

The Slabbincx family has worked to make the company an international reference for liturgical vestments.

The craftsmanship, eye for detail service-minded company culture are well known.

With our dedicated team, we specialised in customized and bespoke projects and guarantee the highest quality.





Liturgy is touched by the beauty of creation and it is transfigured through prayer.

We, at Slabbinck, are in service of the liturgy and people, such as yourself.

While remaining true to this tradition, each day we strive to be creative and to look for new ways of expressing this beauty.



5283

Chasuble in **Moiré**; with hand embroidered ornaments and "Good Shepherd"; machine embroidered emblem; finished with gold braid.



299-3978



299-2749



299-3986



Other designs, see website

299-5342
Roman chasuble in gold brocade; with hand-embroidered design on red velvet.





5285

Chasuble, in **Sentia**, with machine embroidered lines in gold-, silver- and old-gold threads.



3569 - 50-3568

Chasuble and overlay stole in **Cantate**, exquisite hand embroidery in the finest cotton and gold coloured threads. "Four Evangelists".



3356 - 50-3356

Chasuble and overlay stole in **Cantate**, exquisite hand embroidery in the finest cotton and gold coloured threads. "Lamb of God".



5284

Chasuble in **Sentia**, machine embroidered motif "The Four Evangelists".



2784

Chasuble in **Cantate**; with hand embroidered motif on dark red velvet.



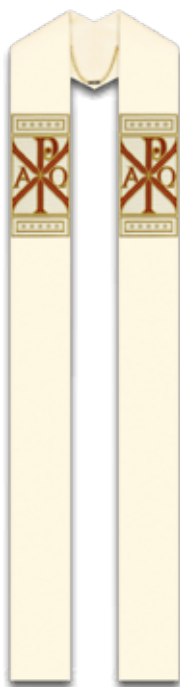
3983 - 50-3860

Chasuble in **Cantate** and overlay stole, hand embroidery on dark red velvet banding, "Four Evangelists".



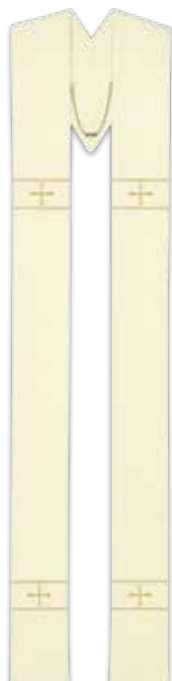
5034

Chasuble and overlay stole in **Cantate**, with Marian motif.



5329

In **Brugia**, band made in **Cantate**; with machine embroidery with gold and/or coloured threads.



5089

In **Cantate**, with machine embroidered cross in gold threads.



5289

In **Duomo**, digitally printed design on damask banding.



Monastic chasuble in **Cantate**, *machine embroidered* with gold and silver coloured threads on woven banding in **Seta**.

2-3850





2-5328

Monastic chasuble in **Dupion**, band with application and wool thread, finished with matching coloured cord.



5226

In **Brugia**, linear design in wool and cross in application.



5176

In **Brugia**, collar and band on front and back in colourful application.



5167

In **Dupion**, with application in **Cantate** finished with embroidered gold lines.



5090

In **Dupion**, with motifs in application.





5232

In **Cantate**, embroidered floral design with Saint George on front and back. Other saints possible (see illustration).



3950

In **Cantate**, roll-collar in velvet; applique embroidery on a velvet band.



2-5239

Monastic chasuble in **Lucia**, linear design with gold cord.



5343



5344

7-5343

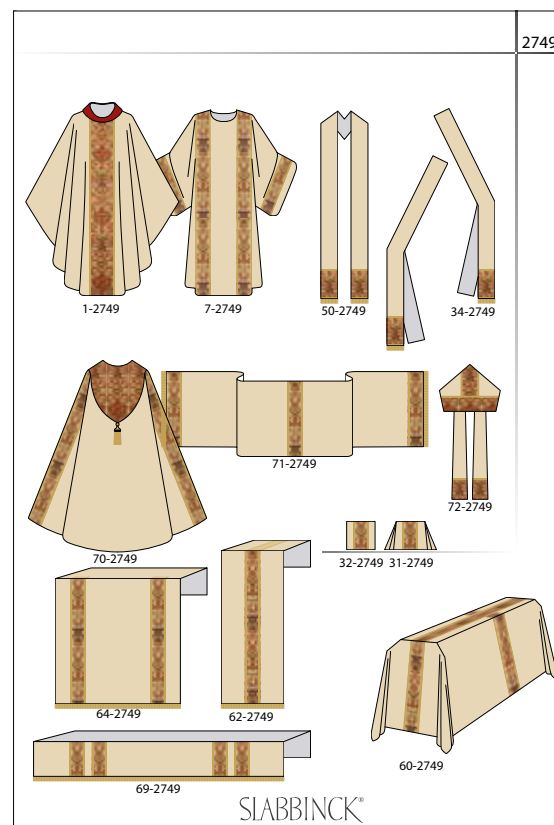
In **Cantate** with application in silky-look.





2749

In **Dupion**, with **Regina** brocade orphreys.





50-2749



2749-0



2749-0



2749-0



2749-0



50-3371



2750-0



2751-4



2752-0



72-2749

70-2749



260-2749



233-2749



230-2749



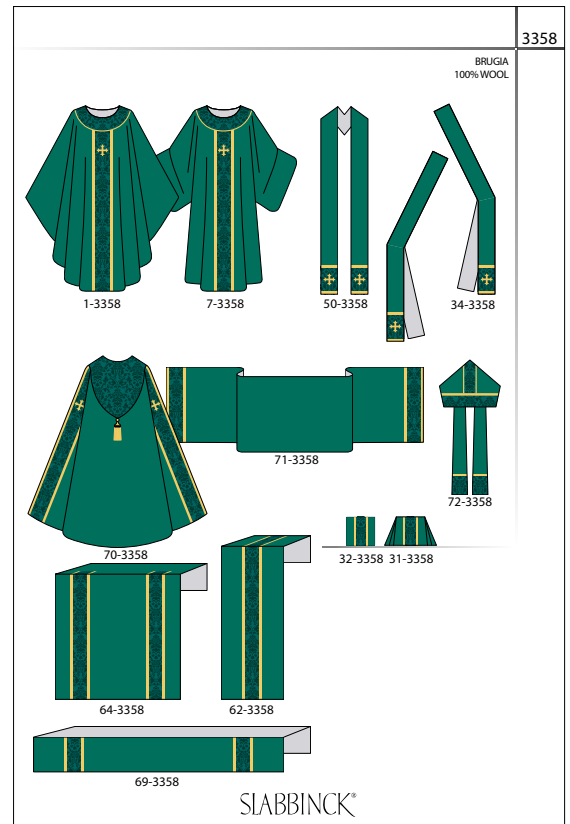
299-2749





3358

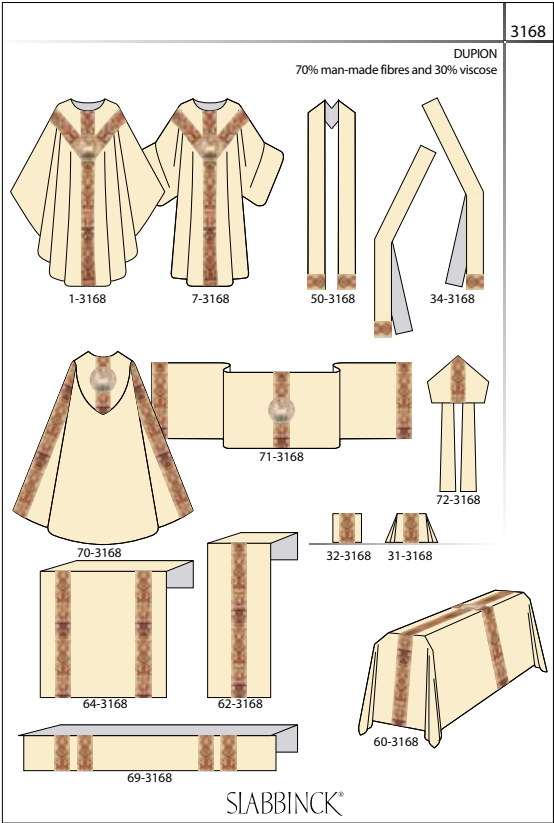
Set in **Brugia**, banding and decoration around neck in **Goya**, damask fabric, with gold braid and hand embroidered cross.



3358

3168

Set in **Dupion**, hand embroidered emblem on an orphrey in **Regina**, a multi-coloured brocade.



3361

3169

3170

3171

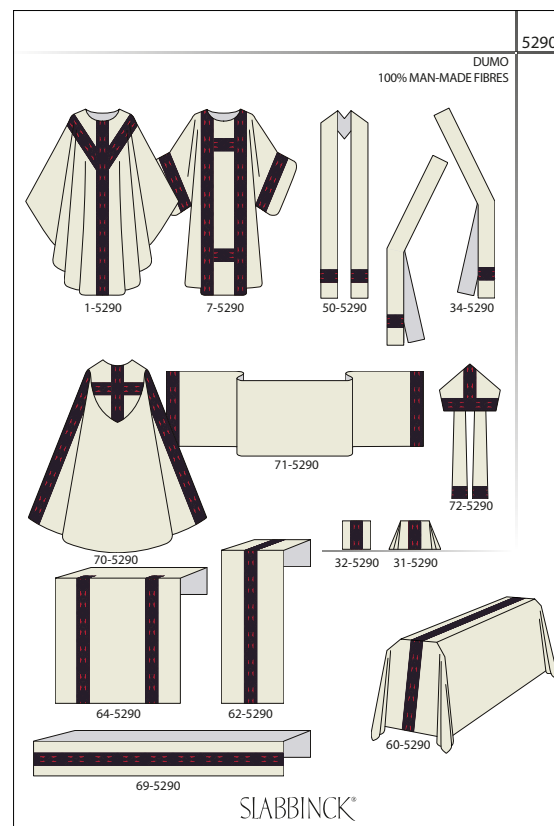
3168





5290

Set in **Duomo**, with beautiful woven galoon.



5290

5290

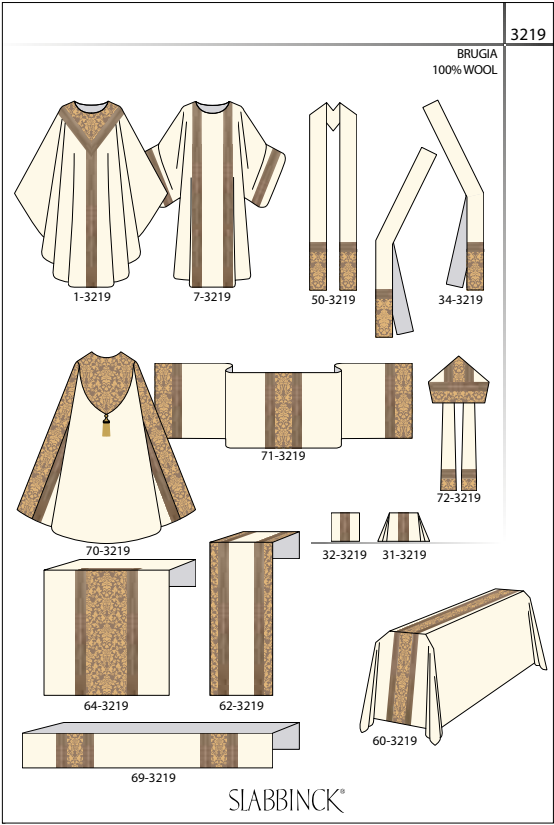
5290

5291



3219

Set in **Brugia**, combination of brocade application and orphreys.



3219





5095

5096

5097

5094



5094 - 5095 - 5096 - 5097
Chasuble in **Sentia**, design by Albano Poli.



Monastic chasuble in **Sentia** with embroidered cross in gold and wool threads on silk applique.

2-90102





5006

5007

5009

5008



5006 - 5007 - 5008 - 5009

Design by **Brody Neuenschwander**, an American calligrapher and text artist, printed on **Pius**.



5230

In **Dupion**, with printed band in **Jona**.



5159

In **Pius**, with printed band in **Pius**.



5056

In **Dupion**, with printed band in **Pius**.



5249

In **Pius**, with digital printed band in **Jona** with cross motif.





5175
Chasuble in **Agate**.



3675
Monastic chasuble in **Venetia**, with motifs woven into the fabric.



3160
Chasuble in **Terra**, with border and cross motifs with colour gradation woven into the fabric.



3111
Chasuble in **Brugia**, band in **Ornata**.



19

In **Melchior** without embroidery, colourful material, with randomly woven gold and coloured threads.



3858

In **Celtic**, woven banding with hand embroidered cross motif in relief and vertical lines.



5082 - 5083

In **Vincenza**, with machine embroidered crosses on application.



5257

In **Duomo**, band in velvet with embroidered gold crosses, outlined with fine gold braid.



3978

In **Adornes**, with embroidered crosses.



5308

In **Brugia**, with Jaquard woven gold/coloured fabric, outlined with gold braid.



5185

In **Pius**, with orphreys.



5340

5340

5340

5340

5341

5340 - 5341

In **Dupion** with machine embroidery with gold and coloured thread.



5195

In **Cantate**, machine embroidered cross and lines.



5144

In **Terlenka**, with elegant galloon.





We believe happiness lies in the details.

*One subtle touch that makes the difference between
fine and masterly.*

*That is what we aim for.
Time and again.*



5121



50-5122



Set in application with embroidery; chasuble and overlay stole in **Dupion**, lectern cover and altar cover in **Omega**.



3921



50-3922



Set in application with embroidery; chasuble, overlay stole, lectern cover and altar cover in **Lucia**; chasuble and overlay stole also available in **Dupion**.



2155



50-2156



Set in application with embroidery; chasuble, overlay stole, lectern cover and altar cover in **Pascal** or in **Cantate**.



Set in application with embroidery; chasuble and overlay stole in **Dupion**, lectern cover and altar cover in **Omega**.



Set in application with embroidery; chasuble, overlay stole, lectern cover and altar cover in **Lucia**; chasuble and overlay stole also available in **Dupion**.



Set in application with embroidery; chasuble, overlay stole, lectern cover and altar cover in **Pascal** or in **Cantate**.





5131



50-5132



Set in application with embroidery; chasuble and overlay stole in **Dupion**, lectern cover and altar cover in **Omega**.



3931



50-3932



Set in application with embroidery; chasuble, overlay stole, lectern cover and altar cover in **Lucia**; chasuble and overlay stole also available in **Dupion**.



3174



50-2534



Set in application with embroidery; chasuble, overlay stole, lectern cover and altar cover in **Dupion**; overlay stole, lectern cover and altar cover also available in **Omega**.



Set in application with embroidery; chasuble and overlay stole in **Dupion**, lectern cover and altar cover in **Omega**.



50-5137

5136



Set in application with embroidery; chasuble, overlay stole, lectern cover and altar cover in **Lucia**; chasuble and overlay stole also available in **Dupion**.



50-3937

3936



Set in application with embroidery; chasuble, overlay stole, lectern cover and altar cover in **Pascal** or **Cantate**.



50-2171

2170



62-3432



66-3431



62-3635



66-3434



62-3241



66-3242



62-3630



66-3629



62-1792



66-1791



62-3631



66-2901



62-3254



66-3256



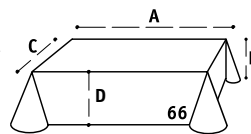
62-3633



66-3632

Full laudian frontal and matching lectern cover in Omega or Lucia

The fabric is reinforced with fused backing material and has rounded corners; the hem is finished with a ribbon on the inside. The side drops (D and E) are of equal length.



Full range via QR code



69-3798



69-3795



69-3796



69-3792



69-3248



69-2752



69-3797



69-3794



69-3791



69-2471



69-3790



69-3329



69-3793



69-3331

Interchangeable superfrontal

These stylish interchangeable superfrontals are lined, interlined and easy to attach with velcro (positive part hooklets attached to the altar cloth, negative part felt attached to the superfrontal), making it possible to leave the main cloth on the altar.

Also available as **half laudian frontal** 166.



Full range via QR code



166-3953



Full range via QR code



35-3334



35-3335



35-3337



35-3315

35-3316

54-7

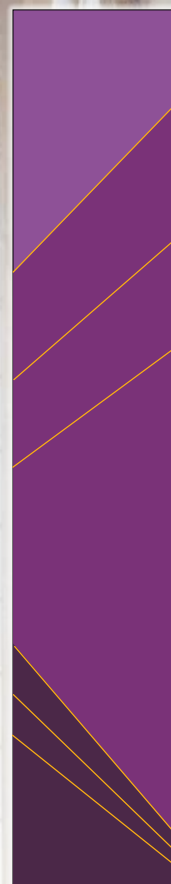
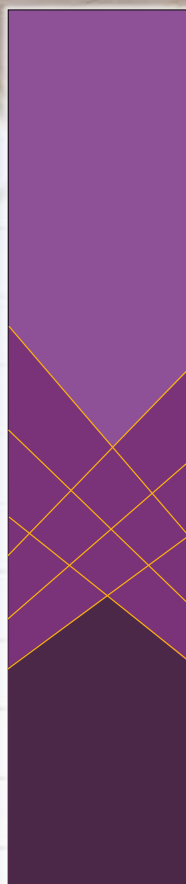
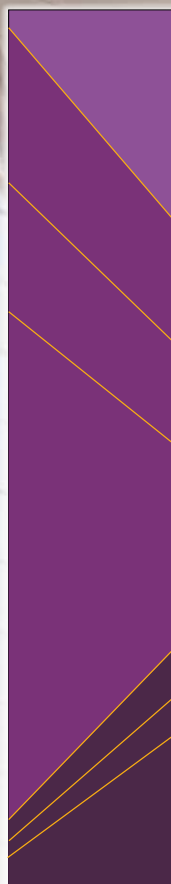
Lectionary cover - Bible marker



Full range via QR code



5268 (B) Lucia



Custom project based on designs 5138, 5139 and 5140



4734 (B) Omega



4736 (B) Lucia



4737 (B) Omega



4738 (B) Omega



4739 (B) Lucia



4740 (A) Omega



See the full range tapestries on our website or ask for a design for your own ideas and wishes.



In washable **Terra**, cross-design woven in a grey band.



In **Brugia**, orphreys in **Ornata**.



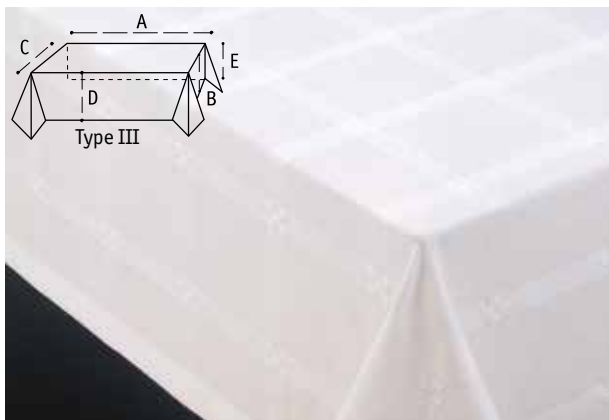
In **Dupion**, with **Regina** orphreys.



In **Vitus**, grey.



See the full funeral assortment.



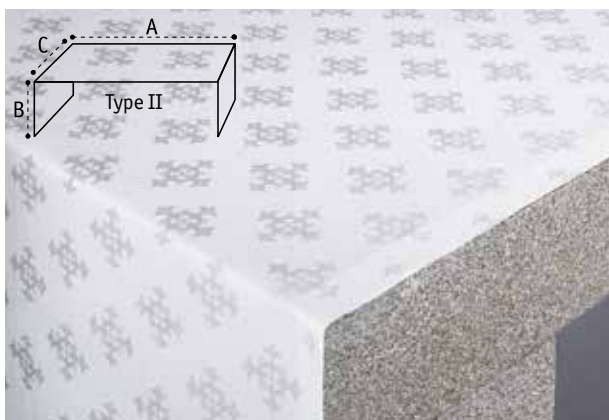
63-35 Alpha

White fabric, 95% cotton, 5% linen, with woven crosses.



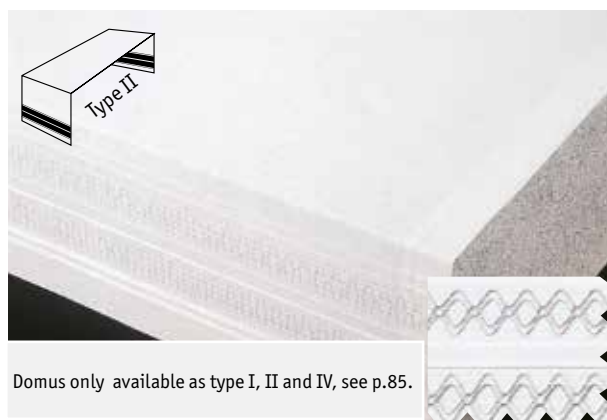
63-41 Basilica

In blended Belgian linen (see 63-38), with inserted woven border on the four sides.



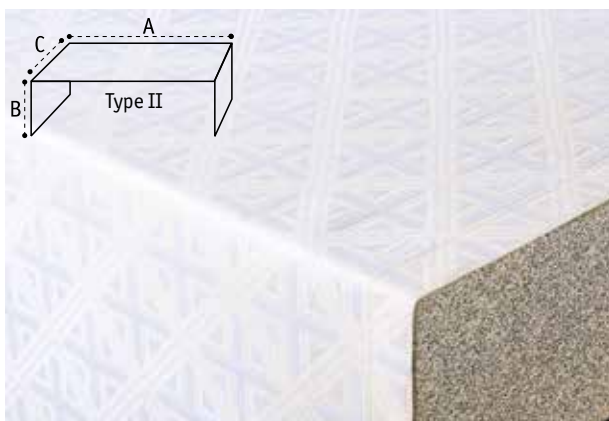
63-124 Adornes

Damask fabric of 100% man-made fibre, with crosses woven into the fabric.



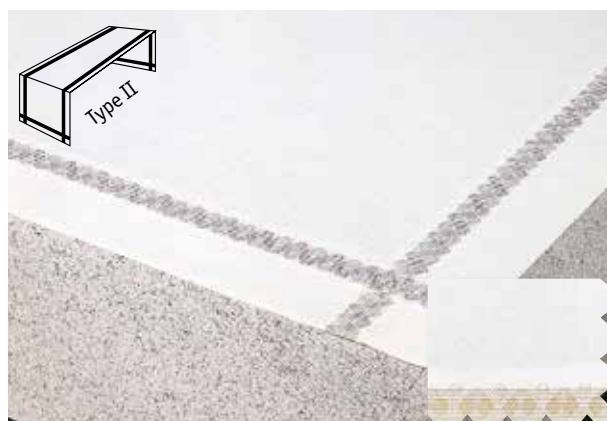
101 Domus

In blended Belgian linen (see 63-38), with linear embroidery and stitched gathers.



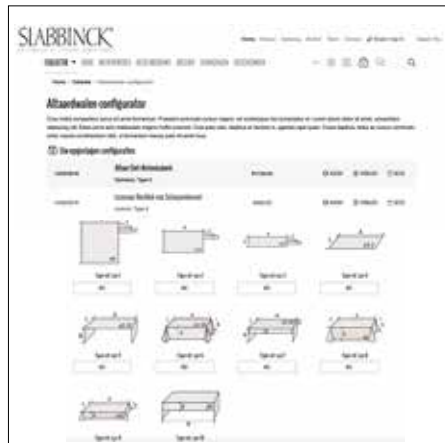
63-85 Crux

White jacquard fabric of 85% man-made fibres and 15% cotton, with inset woven cross motifs.

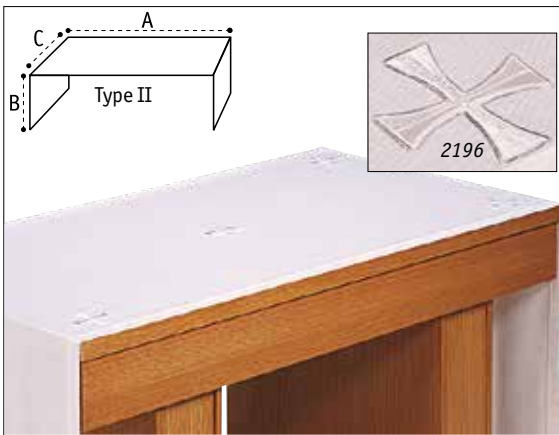


301 Cathedral

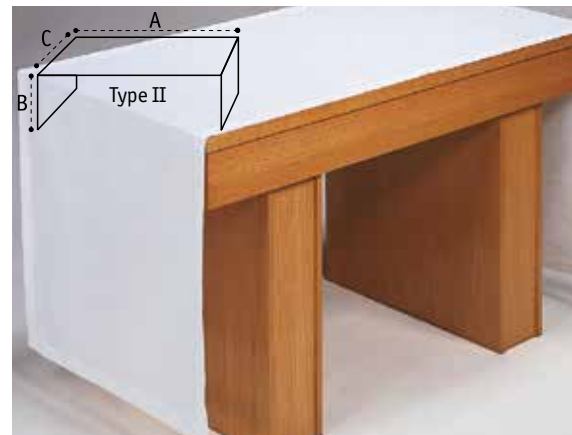
In blended Belgian linen (see 63-38), with open embroidery in (59) grey-white or (60) gold-white.



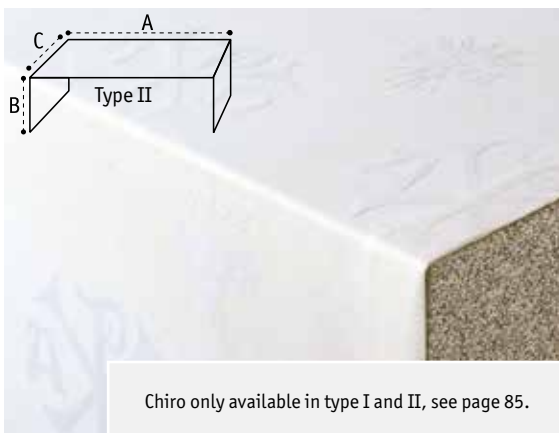
Altar cloth configurator: in five simple steps we will calculate the price of your customized altar cloth.



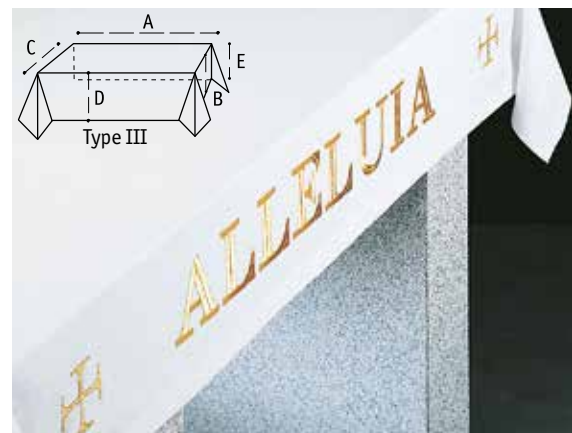
63-87
In **Ravenna**, 70% man-made fibres, 30% viscose, with crosses 2196.



63-38
In **blended linen**.

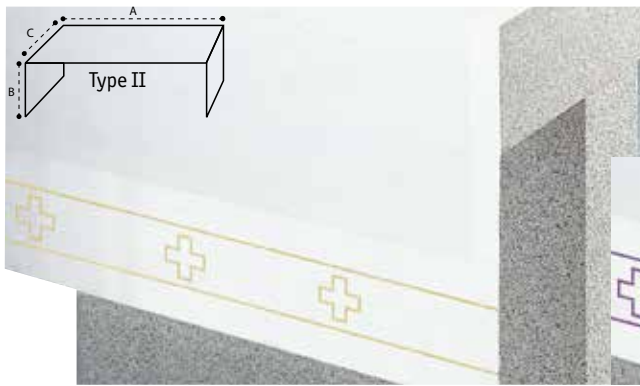


63-93 Chiro
White jacquard fabric of 100% man-made fibres, with inset woven chiro, wheat and grapes motifs



63-2774
Altar cloth 63-38 with washable embroidery in gold thread.

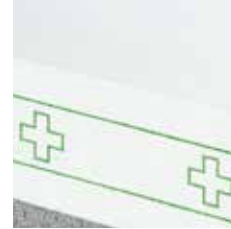
Supplements



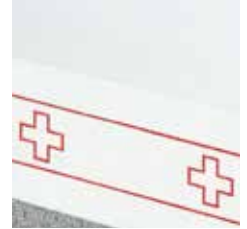
5189

Motif, embroidered cross and lines, can be embroidered on each altar cloth or alb.

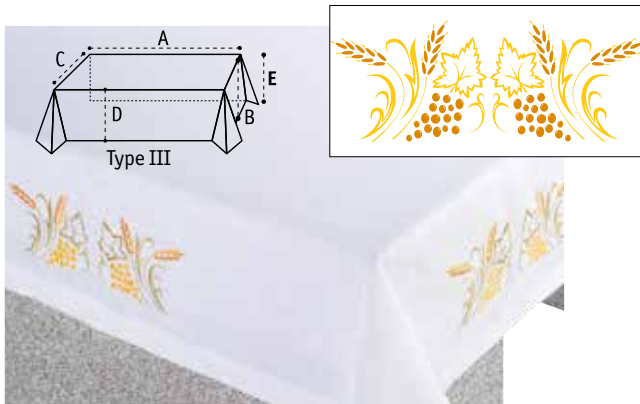
63-5189 (40)



63-5189 (30)

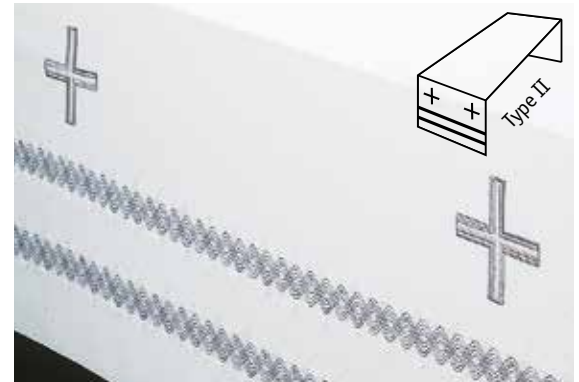


63-5189 (20)



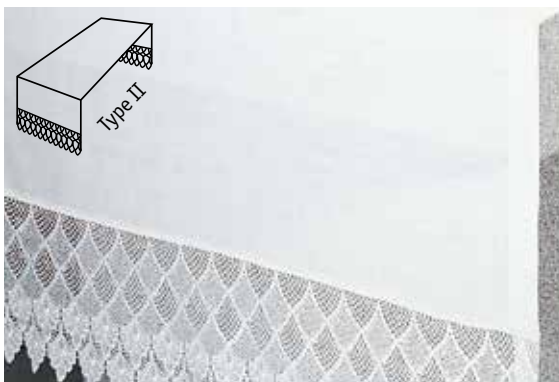
3913

Motif can be embroidered on each altar cloth or alb. 13" by 4 3/4".



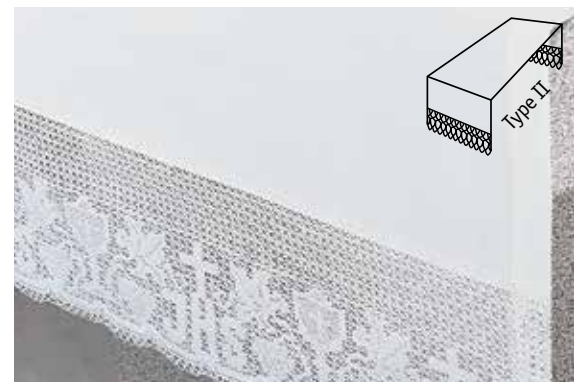
3134

Motif, linear embroidery and crosses can be embroidered on each altar cloth or alb.



2788

Lace in man-made fibres (10") on the 2 side panels in the fabric of your choice.



3382

Lace in 100% cotton (11") on the 2 side panels in the fabric of your choice.



5189
In **Blended Linen**, with gold-coloured cross and lines.



3500
In **Alpha-fabric**, of cotton and blended linen, with crosses woven into the material.



2195
With cross and open hemstitch in the finest cotton batiste.



3207
In fabric of cotton and linen. With Eucharistic motifs woven into the material.



2196
With embroidered cross on **Ravenna-fabric**.



2194
With embroidered motifs on **Blended Linen**.



5046
In **Blended Linen**, with fleur de lis cross.



5047
In **Blended Linen**, with Canterbury cross.



278-5274



278-5270



278-5271



278-5272



278-5273



278-5275



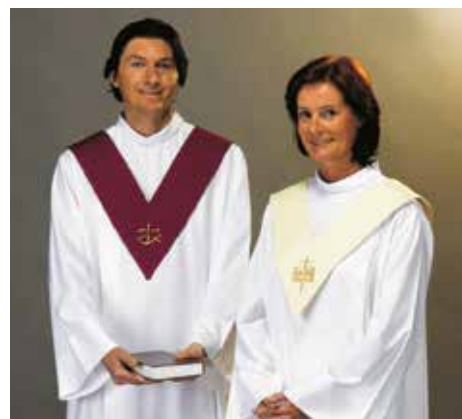
278-5276



278-5277



278-5278



278-5018



278-25



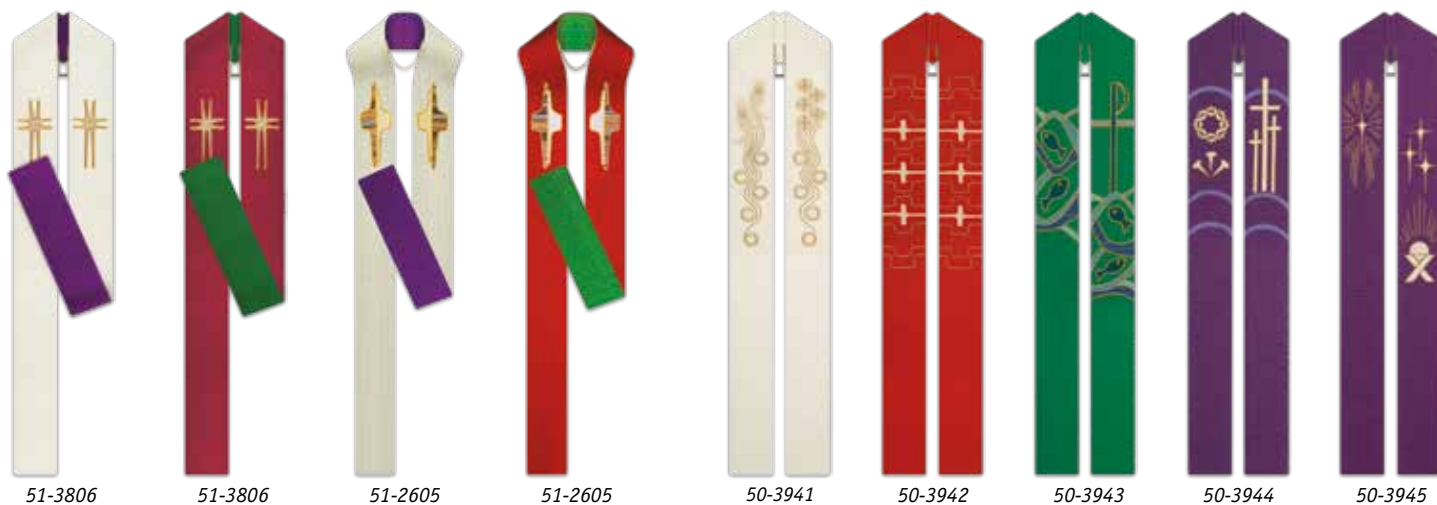
278-5175



278-5175



Order your scapular easily via the QR-code.



Order your reversible overlay stole easily via the QR-code.



Order your overlay stole easily via the QR-code.



34-4739



34-2752

34-3160

34-3160

34-19

34-2605

34-3450

34-19



34-3160

34-3552

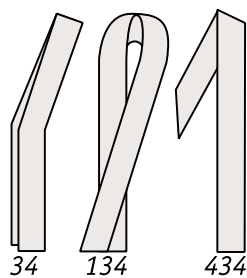
34-3358

34-19

34-3110

34-5290

34-3553



All deacon stoles in this catalogue can be made as overlay stoles or as reversible stoles.



Order your deacon stole easily via the QR-code.



7-2749



7-5343



7-5175



7-5148



7-3358



7-5149



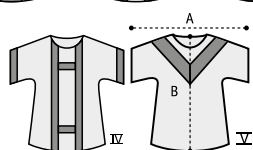
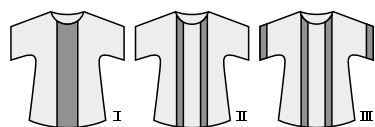
7-3111



7-3576



7-3160



A matching dalmatic is available for each chasuble.

Order your dalmatic easily via the QR-code.





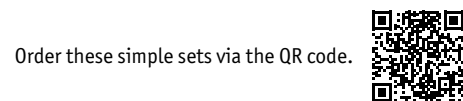
Order your amice simply with the QR-code.



Order your rope cincture for albs simply with the QR-code.



Order your vestment hanger, cover or clergy travel cover/bag simply with the QR-code.





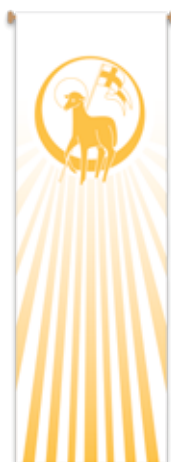
7144



7135



7134



7111



7112



7117



7118

↔ 3¼'



7148



7149



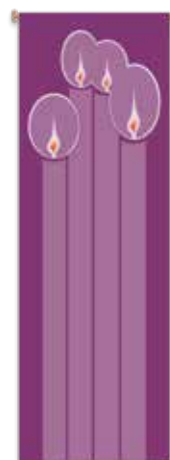
7124



7126



7129



7119



7120

↔ 9½'



7127



7128



7113



7114



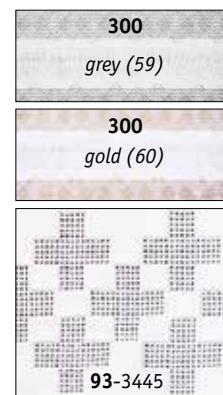
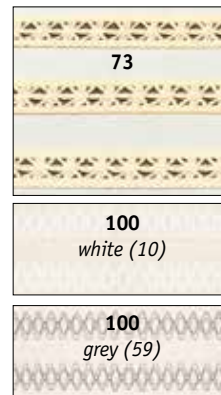
7115



7116



7122



Alb in coat style



With this QR code, simply order your **albe in coat style**: style 11, 29, 73, 93, 100 and 300.

Standard sizes

When ordering, please indicate length A-B: from base of the neck to top of shoe (usually approx. 12" less than person's height).

Neck size for sizes **Slim** and **Regular**: 16½".

Neck size for sizes **Large** and **XLarge**: 18".

MEN	Chest C			
length A-B	37" slim	41" regular	45" large	49" XLarge
55"	SK	MK	LK	50
57"	0	2	5	51
59"	1	3	6	52
61"	8	4	7	53
63"	SG	MG	LG	54
LADIES	Chest C (in inches)			Size
length A-B				
51"	31-34			L6
52"	31-34			L8
53"	34-37			L10
53"	37-41			L11
54"	34-37			L12
54"	37-41			L13
55"	37-41			L14
57"	41-45			L15
59"	45-49			L16

Should your order not specify (C), regular (41") for men and (34"-37") for ladies will be supplied.

11 (Leo) - Alb in coat style



95

195

Liturgical gown



244

Gown



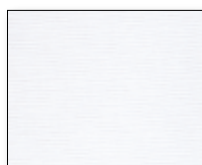
Athos-37



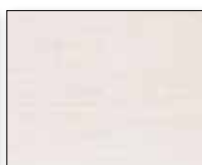
Brugia-92



Greco-77



Jersey-53



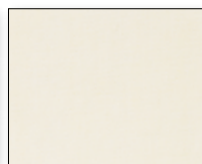
Leo-70



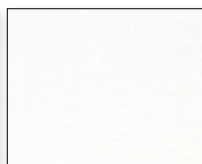
Livorno-20



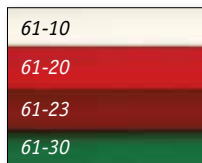
Pius-54



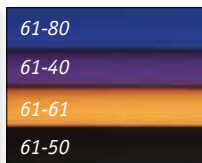
Prisma-26



Ravenna-87



Terlenka-61



Vaticano-67



44 (Vaticano)
Sanctuary alb



With this QR code, simply order your **alb**: style 95, 195, 44 and 244.



285 - Terlenka



444-3718 - Terlenka



444-3382 Ravenna



14-3382 Ravenna

Cassock , surplice and surplice-alb



Order these vestments with the QR-code.



414-61 - Terlenka



414-2195 - Terlenka



214-77 - Greco



14-945 - Greco



14-61 - Terlenka



4 - Vaticano



5 - Terlenka

Washable surplice and washable choir and servers albs

Order your **surplice and choir and server albs**, with the QR-code.



414-61

Illustration: alb, style 205

3647 - 3653 \updownarrow 24"
Cord with hand-made tassel

4614 \updownarrow 4 5/8"
Small wooden cross, with ring.







↑ 7 $\frac{5}{16}$ " ▢ 14 $\frac{1}{4}$ oz

4358

Completely gold-plated, handmade silver-plated node.



↑ 8 $\frac{1}{2}$ " ⊕ 300/190

4359

Completely gold-plated, handmade silver-plated node.



Information patens, see p. 60.

The height ↑ of the ciboria includes the cross on the lid. Capacities ⊕ are given in hosts, dia. 1 $\frac{1}{8}$ " (1st n°: normal hosts, 2nd n°: thicker hosts).





↑ 7 7/8" ∪ 10 1/8 oz

8075

Chalice, gold-plated, with decorative node.



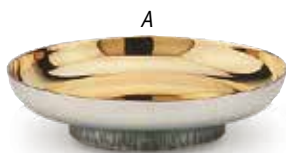
↑ 8 3/4" ⊕ 300/190

8275

Ciborie, gold-plated, with decorative node.



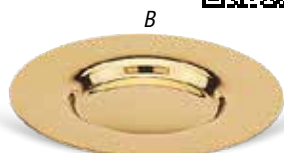
Paten.



A

∅ 6"

⊕ 150/100



B

∅ 6"

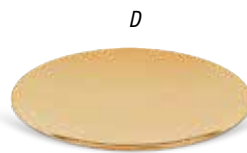
⊕ 30/20



C

∅ 6 1/8"

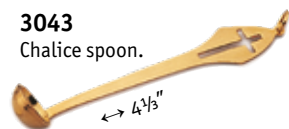
⊕ 150/100



D

∅ 5 1/2"

⊕ 25/15



3043

Chalice spoon.

↔ 4 1/3"

The height ↑ of the ciboria includes the cross on the lid. Capacities ⊕ are given in hosts, dia. 1 1/8" (1st n°: normal hosts, 2nd n°: thicker hosts).



↑ 7", ∇ 23 oz

4238

Chalice, illustration "Lamb of God", silver-plated, inner cup gold-plated.



3620/3621/3622

Case for chalice and paten.



∅ 6 1/4"

9238

Matching paten.

Information patens, see p. 60.

The height ↓ of the ciboria includes the cross on the lid. Capacities ⊕ are given in hosts, dia. 1 1/8" (1st n°: normal hosts, 2nd n°: thicker hosts).





↑ 6 1/8" ▢ 10 1/2 oz

1825

Chalice, all polished pewter.



↑ 7 1/4" ⊕ 200/125

1826

Ciborium, all polished pewter.



↑ 6 1/2" ▢ 16 1/2 oz

5055

Chalice, entirely stainless steel; node with bread symbol.



↑ 7" ⊕ 270/165

5056

Ciborium, entirely stainless steel; node with bread symbol.

Information patens, see p. 60.

The height ↑ of the ciboria includes the cross on the lid. Capacities ⊕ are given in hosts, dia. 1 1/8" (1st n°: normal hosts, 2nd n°: thicker hosts).



Ø 6 1/8" ⊕ 150/100

3177

Paten-open ciborium in brass, gold-plated.



Ø 6 5/16" ⊕ 280/175

2037

Paten-open ciborium, structured stainless steel, gold-plated inside.



↔ 10" ⊕ 250/160

3780

Paten in "Ictus" fish-shape, hammered and gold-plated 24 carat.



Ø 5 1/2" ⊕ 380/240

3299

Deep paten, brass, base hand hammered, gold-plated.



↑ 3 1/2" Ø 6" ⊕ 320/200

4146

Paten-open ciborium all pewter, polished, hand-hammered.



Ø 6" ⊕ 320/200

4145

Paten-open ciborium, all pewter, polished, hand-hammered.



The height ↑ of the ciboria includes the cross on the lid. Capacities ⊕ are given in hosts, dia. 1 1/8" (1st n°: normal hosts, 2nd n°: thicker hosts).



Pyxes



3250 ø 1 $\frac{1}{8}$ " ⊕ 9/5



3265 ø 1 $\frac{1}{8}$ " ⊕ 9/5



3235 ø 1 $\frac{1}{8}$ " ⊕ 9/5



3292 ø 1 $\frac{1}{8}$ " ⊕ 15/6



3255 ø 3 $\frac{5}{16}$ " ⊕ 75/25



3252 ø 2 $\frac{1}{4}$ " ⊕ 24/8



3275 ø 1 $\frac{1}{8}$ " ⊕ 9/5



3254 ø 3 $\frac{5}{16}$ " ⊕ 75/25



3251 ø 2 $\frac{1}{4}$ " ⊕ 24/8



3278 ø 2 $\frac{1}{4}$ " ⊕ 24/8



6254 ø 3 $\frac{5}{16}$ " ⊕ 75/25



3346
Case in genuine leather, with cord, for pyxes
up to dia. 2 $\frac{3}{8}$ ".



ø 6 $\frac{5}{16}$ " ⊕ 320/200



3394
Chalice and paten all
stainless steel.



3441
Case, with 3 ampullae with stopper.





↑ 6½" ▢ 22 oz

1254

Chalice, hand-blown glass, engraved motif.



↑ 14½" ▢ 30⅞ oz

1268

Flagon with stopper, hand-blown glass, engraved motif.



ø 5½" ⊕ 150/100

1255

Bowl paten, hand-blown glass, engraved motif.



↑ 2¾" ▢ 2⅓ oz

↔ 10½" ↗ 6½"

3740

2 cruets, with tray, all in recycled glass



↑ 2⅞" ø 5⅞" ⊕ 250

3759

Paten, in recycled glass.

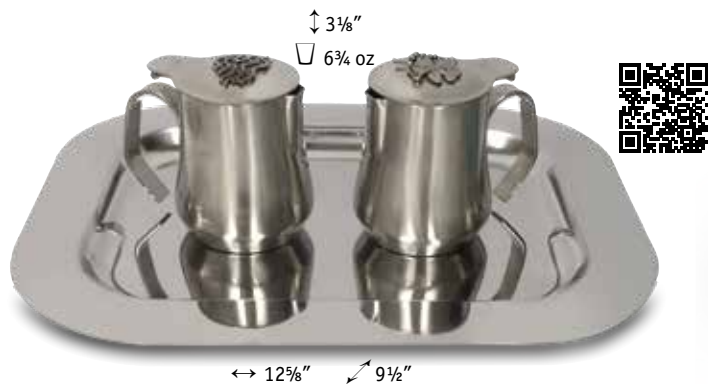


↑ 9" ø 4⅞"

3758

Chalice, in recycled glass.

Capacities ⊕ are given in hosts, dia. 1⅞" (1st n°: normal hosts, 2nd n°: thicker hosts).



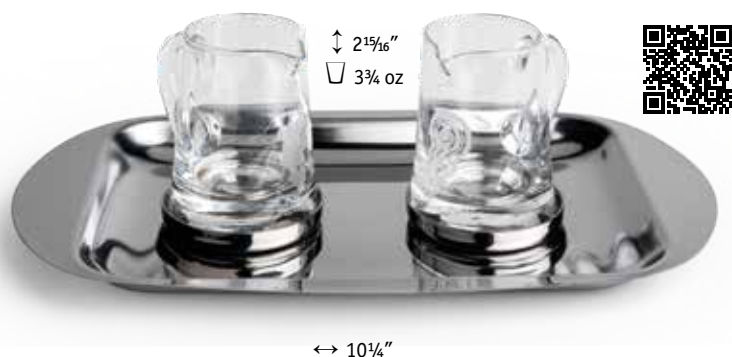
5760

Tray and 2 cruets with wine or water motif on lid, all in stainless steel satinized.



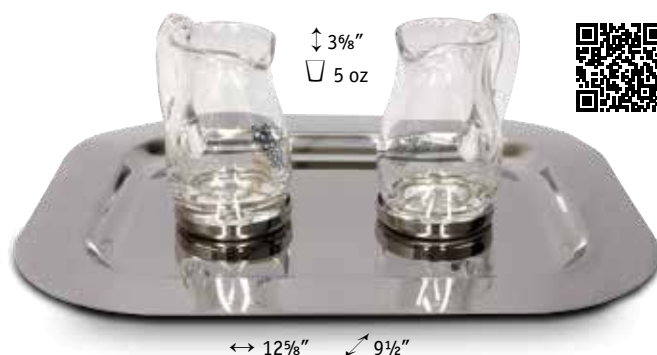
3890

Tray in stainless steel with wine or water motif, relief engraved on glass cruets and on stainless steel lid.



1372

Tray in stainless steel with holders and 2 glass cruets with handle, relief engraved with wine or water motif.



5705

Tray in stainless steel with 2 holders, and 2 glass cruets with printed water or wine symbol.



1970

Glass cruet with engraved water symbol.



1969

Glass cruet with engraved wine symbol.



1275

Glass cruet with relief engraved wine symbol.

height 2 15/16"
capacity 3 3/4 oz



1274

Glass cruet with relief engraved water symbol.



3477

Round case complete set, leather-look, with matching contents.



3612

Compact home Mass Set with practical carrying or shoulder bag; with removable shoulder strap. Handy cover.



3613

Compact home Mass Set with practical carrying or shoulder bag; with removable shoulder strap. Handy cover.



4317

Complete home Mass Set, solid case made of ABS, with alu-frame.





3316
Complete sick-call set.



3309
Complete sick-call set.



2831
Case for three ampullae for oilstock 2827 (INF), 2828 (CHR), 2829 (CAT).



2444
Case for three ampullae for oilstock, ampullae 5104, 5105, 5106 and spoon.



Ampullae for oilstock. With screw-cap, symbol of oil lamp, cap silver-plated.



Triple oilstock.



5134 ↑ 2 1/8"



5104 ↑ 3/4", ø 2" ▢ 1 1/16 OZ



5105 ↑ 3/4", ø 2" ▢ 1 1/16 OZ



5106 ↑ 3/4", ø 2" ▢ 1 1/16 OZ





372

Gothic French monstrance with removable luna.

Representation of Our Lady of Lourdes, the Sacred Heart and St.-Joseph, as well as Holy Spirit symbol. With matching case.





↑ 15"
⊕ ø 2¾"



8407
Baroque monstrance, gold-plated and silver-plated;
with removable luna.



↑ 15¾"
⊕ ø 3½"



2844
Hand-hammered, entirely gold-plated;
node silver-plated, with bread and fish symbols,
removable luna.



3061 Silver-plated



3058 Gold-plated

↑ 5½"
⊕ ø 2¾"



↑ 5"



4453
Altar bell, three bells, handle in cast
bronze, bells in cast brass, polished.



4454
Altar bell, four bells, handle in cast
bronze, bells in cast brass, polished.



↑ 8⅞" ↘ 15"



4930
Alms bag, red. With handles in
brass with wood and pouch in
velvet.



↑ 8⅞" ↘ 15"

4931
Alms bag, blue. With handles in
brass with wood and pouch in
velvet.



7603
Adjustable lectern
(round base), in cast
brass.



↕ 23³/₈"

2663
Cast brass candlestick.



↕ 39³/₈"

7601
Cast brass candlestick.



↕ 39³/₈"

7751
Cast brass candlestick.



49" ↕

7752
Cast brass paschal
candlestick.



↕ 23³/₈"

2681
Cast brass
candlestick.



↕ 14¹/₂"



3081
Cross in brass.



↕ 3¹/₂"
ø 5¹/₈"

3080
Candlestick in brass.



↕ 8¹¹/₁₆"
ø 5¹/₈"

3075
Candlestick in brass.



↕ 6"
ø 5¹/₈"

3072
Candlestick in brass.

Torch in lacquered brass (no maintenance); candle supported by a coiled spring, pushing the candle up. Standard supplied with acrylic globe 3699.



↑ 31½"

3592

Set of 4 torches 3591 and stand 1932

3591

Torch, brass nickel-plated.



1931

Stand for 1 processional torch.

1932

Stand for 4 processional torches.



↑ 31½"

3709

Set of 4 torches 3708 and stand 1932.

3708

Torch, brass polished

1932

1931

Stand for 1 processional torch



↑ 5⅞"
Ø 4½"

Ø 3"



1810

Separate glass globe tulip-shaped for torch.



3591



↑ 4¾"
Ø 1⅜"

1252

1252

Candles 7 pieces



↑ 4¾"
Ø 1⅜"



3708

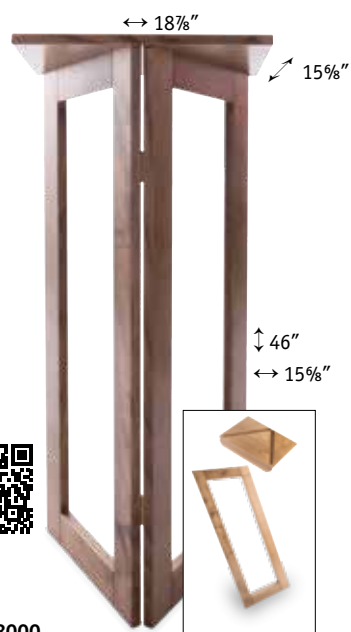




38000
Folding altar in ash wood.



18000
Folding lectern in ash wood.



26000
Adjustable lectern in walnut wood.

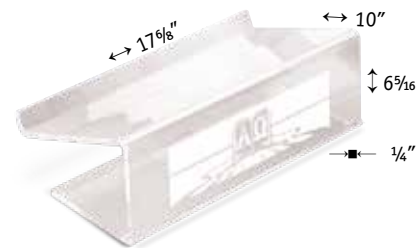


2329
Support for baptismal font in light coloured beech wood.

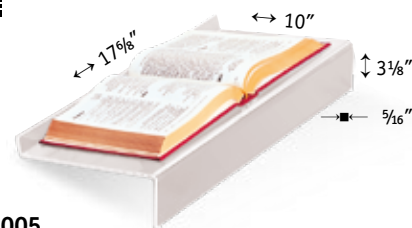
2005
Baptismal font with lid, brass, polished.



4349
Adjustable lectern in wood, easily portable in Home Mass Set.



5019
Lectionary stand, in plexiglass, with Alpha and Omega symbols on front.



5005
Lectionary stand, in plexiglass, without motif.

Wrought iron

15 3/4" ↑

↔ 15 3/4"

5045

5045
Baptismal towel, with
embroidered symbol.



ø 17"

3881

Baptismal font with lid.

↑ 31 1/2"



3794

As 3881, without lid.

↑ 31 1/2"

ø 17"

39" ↑

ø 15 3/4"

3783

Support for "Holy Fire",
flower stand or support as
advent wreath.



9180

Disc "Holy Fire"
(not available in U.S.).



ø 17 3/4"

↑ 1 1/8"

4095

Tray for "Holy Fire".



Steel, black protective powder coating.

5520

Red sanctuary lamp.

ø 3 3/8"

6 1/2" ↑

3981

LED candle.



↑ 41"

4" ↑

5017

Dark wooden lectern.
The height can be
adjusted.

↔ 17 3/4"

↑ 33 1/2" to 47"



6" ↑



5018

As 5017, with plexi lectern.
The height can be adjusted.

4134

High candlestick,
round base.

23 5/8" ↑



4139

Only support for sanctuary
lamp on base.



Wrought iron

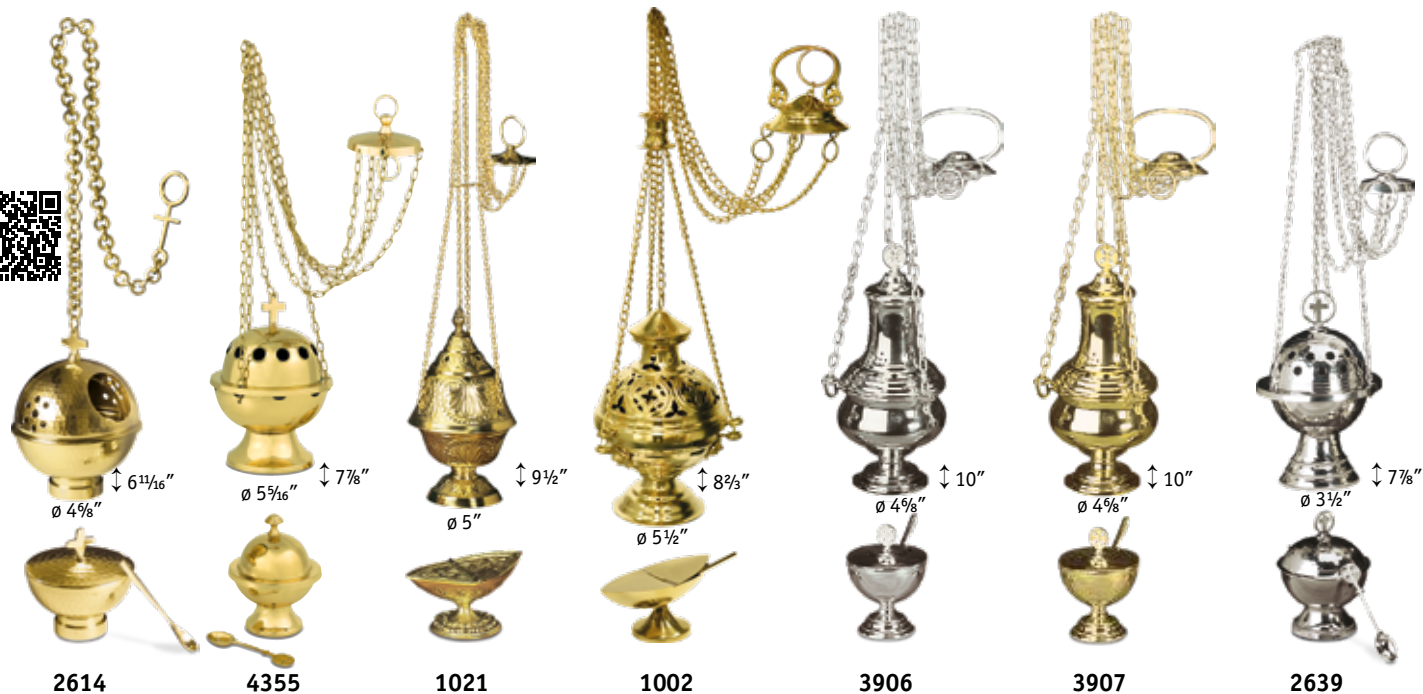
↑ 48"



3791

Easter candlestick.





Censer in brass or nickel-plated as shown, with boat and spoon.

3698

Complete set. In brass, polished and lacquered (no maintenance).



3697

Complete set. In brass, nickel-plated.



3695

Sprinkler in brass, with wooden handle.

3696

Sprinkler in brass, nickel-plated.

3693

Holy Water vat in brass.



2365

Sprinkler in brass.

2612

Holy Water vat in brass.

2364

Sprinkler in brass, nickel-plated.

2613

Holy Water vat in brass, nickel-plated.



9½" ↑

1724

Cross, Risen Christ, dry sand cast bronze.



↔ 9½"

4465

Altar cross (recumbent), brass.



∅ 5⅞"

4068

Candle holder,
dry sand cast bronze.



↕ 4"

1453

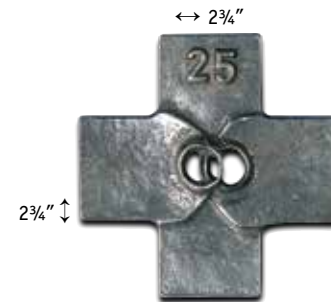
Brass, bronze colour.



↕ 4"

1426

Emmaus Disciples,
dry sand cast bronze.

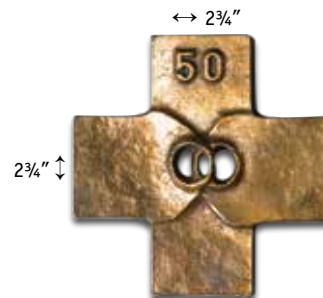


↔ 2¾"

4425

Matrimonial cross, 25 years,
silver colour.

2¾" ↑

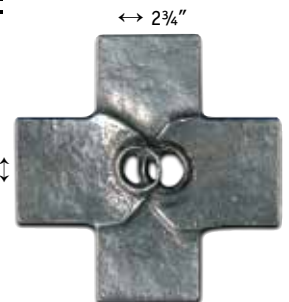


↔ 2¾"

4450

Matrimonial cross,
50 jaar, bronze colour.

2¾" ↑



↔ 2¾"

4334

Matrimonial cross, silver colour.

2¾" ↑



5499
Stations of the Cross, 14 Stations, in cast polyester. Polychrome finish.

5420
Stations of the Cross, 14 Stations, in cast polyester. Polychrome finish.



5409
Stations of the Cross, 14 Stations, in cast polyester. Wood colour.



5418
Stations of the Cross, 14 Stations, in cast polyester. Bronze colour.



Wooden cross, hand-painted in El Salvador

3763 5 7/8" ↑

3764 7 7/8" ↑

3876 17 11/16" ↑



“Good Shepherd”



3761 4 3/4" ↑

3762 7 7/8" ↑



Ark of Noah

3765 5 5/8" ↑

3766 7 7/8" ↑



Risen Christ and Holy Spirit.

3878 5 7/8" ↑

3877 7 7/8" ↑



Jesus with the children.

3701 1 1/4" ↑

7/8" ↔



3701

3700 1 1/4" ↑

7/8" ↔



3700



Rosary

3703 1 1/4" ↑

7/8" ↔



3703

3702 1 1/4" ↑

7/8" ↔



3702

↔ 5"

19 3/32"







2134

Wooden memorial cross.

↔ 5 7/8"

9 7/8" ↑





4132

Cross, olive wood.

↔ 3 1/8"

5 1/8" ↑





4129

Cross olive wood, with carved corpus.

Dove of Peace,
olive wood.

3873

↕ 1 3/8"

4613
Cross, wood.

↔ 4 5/8"

4625
Cross, wood.

↕ 3 1/2"

3729
Dove of Peace,
silver-plated
(oxidized).

↕ 1 3/8"

5000
Rosary, pine
wooden beads.

↕ 21"

5001
Rosary, pine wood.



4100
Deacon cross, olive wood.

↕ 2"



4128
Cross, olive wood.

↕ 2 3/4"

4127
Cross, olive wood.

↕ 1 3/8"

↕ 2 3/8"

3871
Cross, Dove of Peace
carved in olive wood.

↕ 2"

3730
Cross,
fish-and-loaf
symbol, silver-plated
(oxidized).

↕ 2 3/8"

3874
Rosary, olive wood.

↕ 2"

3875
"Tau" cross, olive wood.



2 3/16"

↔ 3 1/8"

↔ 3 1/8"

↕ 2 7/8"

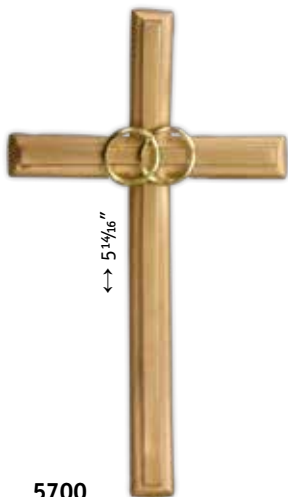
8250
Wooden giftbox.

8221 - 8244

Wooden prayer-dice.

In English (8223), Dutch (8221), French (8222),
German (8224), Italian (8225), Spanish (8226),
Portuguese (8227) and Polish (8244).





5700
Matrimonial cross, metal,
bronze coloured.



5725
Matrimonial cross, 25 years ,
metal, silver coloured, with patina.



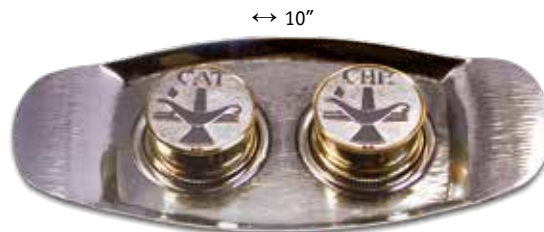
5750
Matrimonial cross, 50 years,
metal, brass coloured.



199
Baptismal shell, gold-plated.



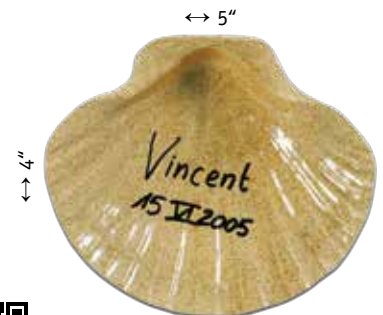
2313
Baptismal shell, silver-plated.



4005
Tray in pewter, with ampullae
5105 (CAT) and 5106 (CHR)



121
Baptismal scapular.

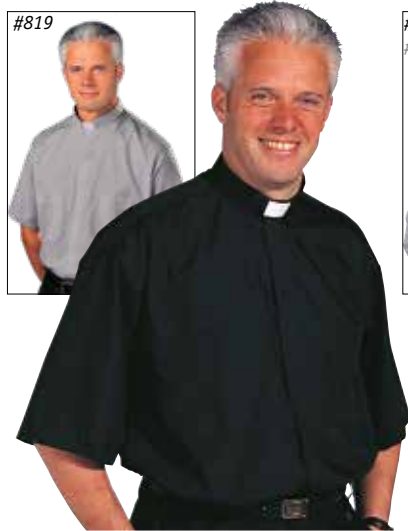


3682
Baptismal shell, of white
Westerwald clay, inside glazed
finishing.

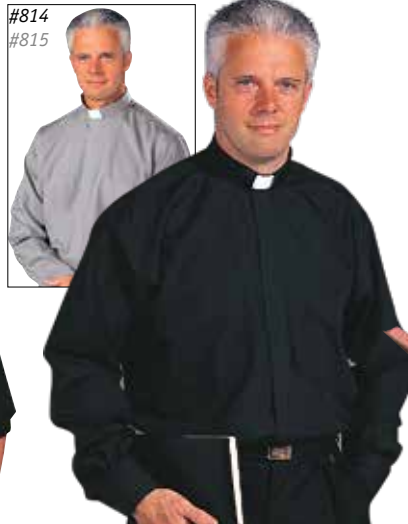


Original Stadelmaier® shirts

Tradicio: Short sleeves #811 (black) #819 (grey); long sleeves #812 (black) #814 (grey) extra long sleeves #813 (black) #815 (grey)
Torino: Short sleeves #861 (black); long sleeves #862 (black); extra long sleeves #863 (black)



#811



#812 #813



#861 #862 #863



#511



Original Slabbinck® shirts

Classico: Short sleeves #31 (black) #35 (grey); long sleeves #16 (black) #17 (grey)
Romano: Long sleeves #55 (black)

Shirt front #511 (black)



#31



#35



#17



#16



#55



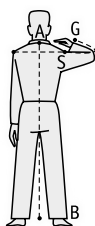
#55



Cuff links



GENERAL INFORMATION: SIZES AND FINISHES



For standard and special sizes and neck finishes, as shown on illustrations, charts and sketches.
All measurements are given in inches.
We supply size and neckline, according to the illustration in the catalogue, unless otherwise specified in your order.
Extra charges are possible for special designs and measurements.

Alb, Sanctuary Alb, Liturgical Gown, Tunic

Standard size

When ordering, only A-B = length to be indicated: from the top vertebra to the top of the shoe (12" less than person's total height).

Special size

I Standard size with minor adjustments

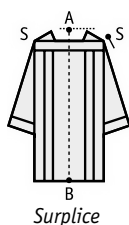
Adjustment A-B = back length and S-G = sleeve length; when ordering, please indicate desired standard size and quote special measurements A-B = back length, S-G = sleeve length and C = chest size.

Supplement for adjustment: Back length and sleeve length *

II Entirely custom-made

Please give the following measurements: A-B = length, C = male chest size or female bust size, W = waist, S-S = shoulder to shoulder, S-G = sleeve length and A-G = measurement from centre back plus sleeve length; preferably also neck size or shirt number size. Supplement *

When ordering, please specify if for a man or woman.



Surplice

Standard size

Chest 41".

Only A-B = length to be indicated when ordering:

- for altar servers: 16", 19½", 24" or 27";
- for adults: 35" (small), 38" (medium) or 41" (large).

Special size

I Standard size with adjustments

Indicate A-B = length, S-S = shoulder to shoulder and S-G = sleeve length when ordering. Supplement *

II Entirely custom-made

Please give the following measurements: A-B = length, C = male chest size or female bust size,

S-S = shoulder to shoulder, S-G = sleeve length. Supplement *



Cope, Humeral veil, Mitre

• Cope

When ordering, indicate A-B = length of cope and person's total height (length of the cope is 14" less than person's height). Without indication of length, we supply standard size 57".

Supplement lining for cope *

Overlay stole or inside stole NOT included in price of cope.

Please order separately.

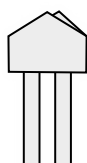


Humeral veil

• Humeral veil

Available with matching decoration. Standard finish is always lined.

Size: 21" x 108".



Mitre

• Mitre

When ordering, please indicate head size.



* Prices: see our pricelist.



Chasuble, Monastic Chasuble, Dalmatic

- Prices include (unless otherwise specified):
- small chasuble or dalmatic stole to be worn under the garment;
 - if embroidered, same embroidery on front and back;
 - neck finish according to catalogue;
 - unlined.

Standard size

Style	A = width	B = length	Supplement
Small	59"-63" ¹⁾	49"	Basic price
Standard	59"-63" ¹⁾	53"	Basic price

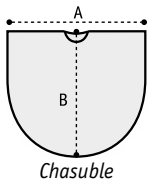
¹⁾ According to the width of the fabric, see information fabrics for vestments and paraments p. 86 and 87.

Special size

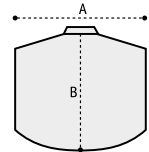
2	Supplement monastic chasuble	*
9	Special, custom-made	upon request

Available at extra charge:

Chalice veil, unlined, 23" x 23"	upon request
Chalice veil, lined, 23" x 23"	*
Burse, 8" x 8"	*
Benediction burse (without embroidery), 9" x 9"	upon request
Chasuble or dalmatic inside stole to be worn under chasuble or dalmatic	*
Lining for chasuble or dalmatic	*

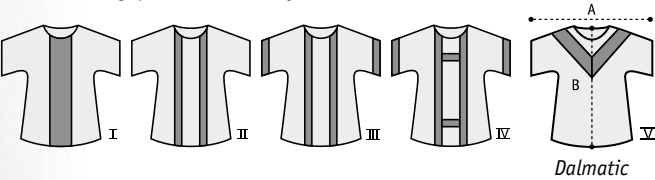


Chasuble



Monastic Chasuble

Dalmatic: a matching dalmatic is available for each chasuble. Price upon request. When ordering, please indicate style I, II, III, IV or V.

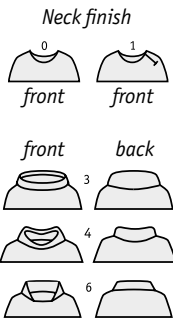


Neck finish

F = neck size; H = height of collar or capuche. The neck finish indicated in the catalogue is included in the price; other neck finishes are available at extra

charge or reduction according to tariff below.

N°	Neck finish	F	H	Price difference
0	Plain	25"	-	Basic price
1	Plain neckline, with zipper on left shoulder	24 3/8"	-	*
3	Roll-collar	26"	4 3/4"	*
4	Roll-collar	25 1/2"	3 1/2"	*
6	Low stand-up collar	26 3/4"	3 1/8"	*
6A	As 6, embroidered	26 3/4"	3 1/8"	*



Embroidered memorial label.

Can be applied to all vestments and paraments. Text is embroidered on the lining of the stole. A lasting memorial.

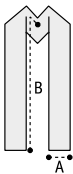
85 Label, gold colour embroidery: per letter

Example:



* Prices: see our pricelist.

GENERAL INFORMATION: SIZES AND FINISHES



Overlay stole (single-sided or reversible), Deacon stole

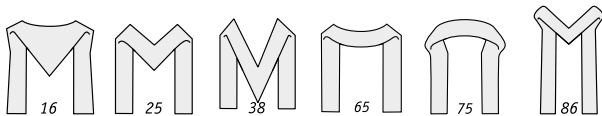
• Overlay stole

Always lined and interlined; available with different neck finishes, supported by an elegant chain (except style 107), which prevents the stole from rubbing neck or hair, and saves the use of a stole protector.

I Single-sided overlay stole

Style and neck finishes: A = width at ends; B = overall length, neck finishes included. The neck finish indicated in the catalogue is included in the price; other neck finishes are available at extra charge or reduction,

*

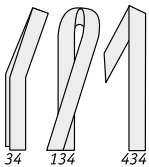


N°	Neck finish	Width A	Length B
16	Full tapered flat capuche; spreading out towards ends	6 ⁵ / ₁₆ "	63"
25	Flat capuche	4 ³ / ₄ "	57"
38	Tapered flat capuche	4 ³ / ₄ "	61"
65	Flat rounded neck finish	4 ³ / ₄ "	57"
75	Stand-up collar	4 ³ / ₄ "	57"
86	Pointed flat capuche; spreading out towards ends	6 ⁵ / ₁₆ "	63"
107	Flat rounded neck finish with cutouts in front	5 ¹ / ₈ "	57"

II Reversible overlay stole

Manufactured like the overlay stole, but reversible: white-purple, red-green or other colour combinations.

• Deacon stole



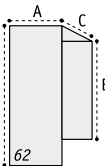
Matching the design of the overlay stole. Worn from left shoulder to right hip. Deacon stoles will be delivered for a standard chest size 37"-45". On request deacon stoles can be made to custom size at no additional charge. Standard chest size (37"-45") will be supplied unless otherwise requested. Style 34: embroidery in front at chest height, on back on lower panel.

Style 134: Crossed style

Style 434: Byzantine cut, with band front and back.

N°	Type	Width A	Length B
34	Standard	4 ³ / ₄ "	57"
134	Crossed style	4 ³ / ₄ "	57"
434	Byzantine	4 ³ / ₄ "	51"

Lectern cover, Pulpit cover, Altar paraments, Altar cover, Antependium, Half Altar cover



Lectern cover

Lined and interlined; finished with an open hem at the top and the bottom; microphone opening to order²⁾.

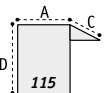
• Lectern cover, style 62

A = width up to 24" (at indicated price, without supplement); D = front drop; C = depth; E = back drop; D + C + E = overall length.

Standard sizes D + C + E = 71". A = 18". D = 43".

Special sizes If longer or deeper than standard sizes, add a supplement per inch

*



Pulpit cover

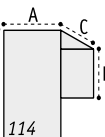
• Pulpit cover, art. 115

Same finish as lectern cover art. 62, but with different standard sizes and special sizes.

Standard sizes D + C = 39³/₈". A = 17³/₄". D = 21⁵/₈".

Special sizes If longer or deeper than standard sizes, add a supplement per inch (same as for lectern cover art. 62)

*



Altar paraments

• Altar paraments, style 114

Same finish as lectern cover art. 62, but with different standard sizes and special sizes.

Standard sizes D + C + E = 59". A = 17³/₄". D = 29¹/₂".

Special sizes If longer or deeper than standard sizes, add a supplement per inch (same as for lectern cover art. 62)

*

* Prices: see our pricelist.

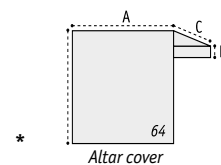


• **Altar cover, style 64**

A = width up to 42" (at indicated price, without supplement);
D = front drop; C = depth; E = back drop; D + C + E = overall length.

Standard sizes D + C + E = 75". A = 36". D = 36".

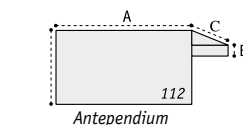
Special sizes If longer or deeper than standard sizes, add a supplement per inch



• **Antependium, style 112**

A = width up to 71" (at indicated price, without supplement); D = front drop; C = depth;
E = back drop; D + C + E = overall length.

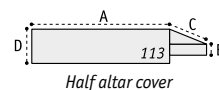
Standard sizes D + C + E = up to 75". A = up to 71". D = 36".



• **Half altar cover, style 113**

Same as antependium, style 112 but with different standard sizes and special sizes.

Standard sizes D + C + E = up to 51". A = up to 71". D = 14".



Altar cloth, Laudian frontal, Half Laudian frontal

Microphone opening and special cut-out (e.g. tabernacle) to order²⁾.

• **Altar cloth, style 63**

When ordering, indicate measurements for **finished** altar cloth; A = length of mensa;

B = side drops;

C = depth of mensa; D = front drop; E = back drop.

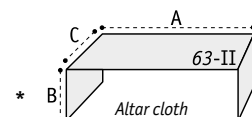
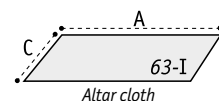
If depth (C) is over the width of the fabric, the altar cloth is finished with a seam.

There is 1 yard minimum charge.

The necessary fabric is added to the altar cloth (style 63), to compensate for shrinking during first laundering. Due to the different washing and laundering procedures, the fabric may shrink more or less than anticipated. Therefore, all altar cloths are provided with a large hem of 1½" to be adjusted if necessary.

Prewash is possible if requested, supplement is

The front and back drop of type IV, are always attached by seams to the altar cloth.



• **Laudian frontal, style 66**

Covers the altar on all sides, corners are rounded. Interlined. Finished with a middle seam in the length. When ordering, indicate measurements for **finished** laudian frontal:

A = length of mensa; C = depth; D and E = equal front and back drops, usually 2" less than altar height.

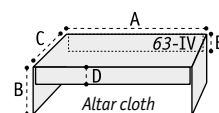
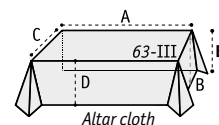
Special sizes

If the measurement A is more than 71",

supplement per inch

If the measurement C + D + E is more than twice

the width of the fabric



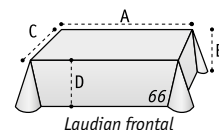
price upon request

price upon request

• **Half Laudian frontal, style 166**

Same as laudian frontal, style 66, but with shorter front, back and side drops D and E up to 10".

Special sizes



price upon request

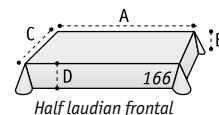
Interchangeable altar panels

• **Interchangeable superfrontal, style 69**

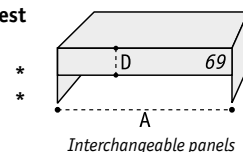
Adorns front of altar cloth. When ordering, please indicate:

A = length of mensa (standard length 71"; over 71", supplement per inch);

D = height (standard ht. 10"; over 12"; supplement per inch)



prices upon request



²⁾ Microphone opening, supplement of

Special cut-out, supplement of

No deduction for less than standard size.



* Prices: see our pricelist.

General information: wash-and-wear fabrics for albs

↔ 59"

Athos 37-59

70% man-made fibres, 30% viscose,
200 g per m².

↔ 59"

Brugia 92-10

92-14

92-50

100% wool, 180 g per m².

↔ 59"

Greco 77-14

70% man-made fibres, 30% viscose,
175 g per m².

↔ 59"

Jersey 53-10

100% man-made fibres, 240 g per m².

↔ 59"

Leo 70-12

90% man-made fibres, 10% flax,
205 g per m².

↔ 59"

Livorno 20-10

20-14

20-50

55% man-made fibres, 45% wool,
180 g per m².

↔ 59"

Malta 66-10

70% man-made fibres, 30% viscose,
265 g per m².

↔ 63"

Pius 54-10

54-101

54-14

100% man-made fibres,
150 g per m².

↔ 59"

Prisma 26-10

45% wool, 55% man-made fibres,
250 g per m².

↔ 59"

Ravenna 87-10

70% man-made fibres, 30% viscose,
210 g per m².

↔ 59"

Vaticano 67-14

70% man-made fibres, 30% viscose,
265 g per m².

↔ 59"

Terlenka 61-10

61-101

61-20

61-23

61-30

70% man-made fibres, 30% viscose,
175 g per m².

↔ 59"

Terlenka 61-80

61-40

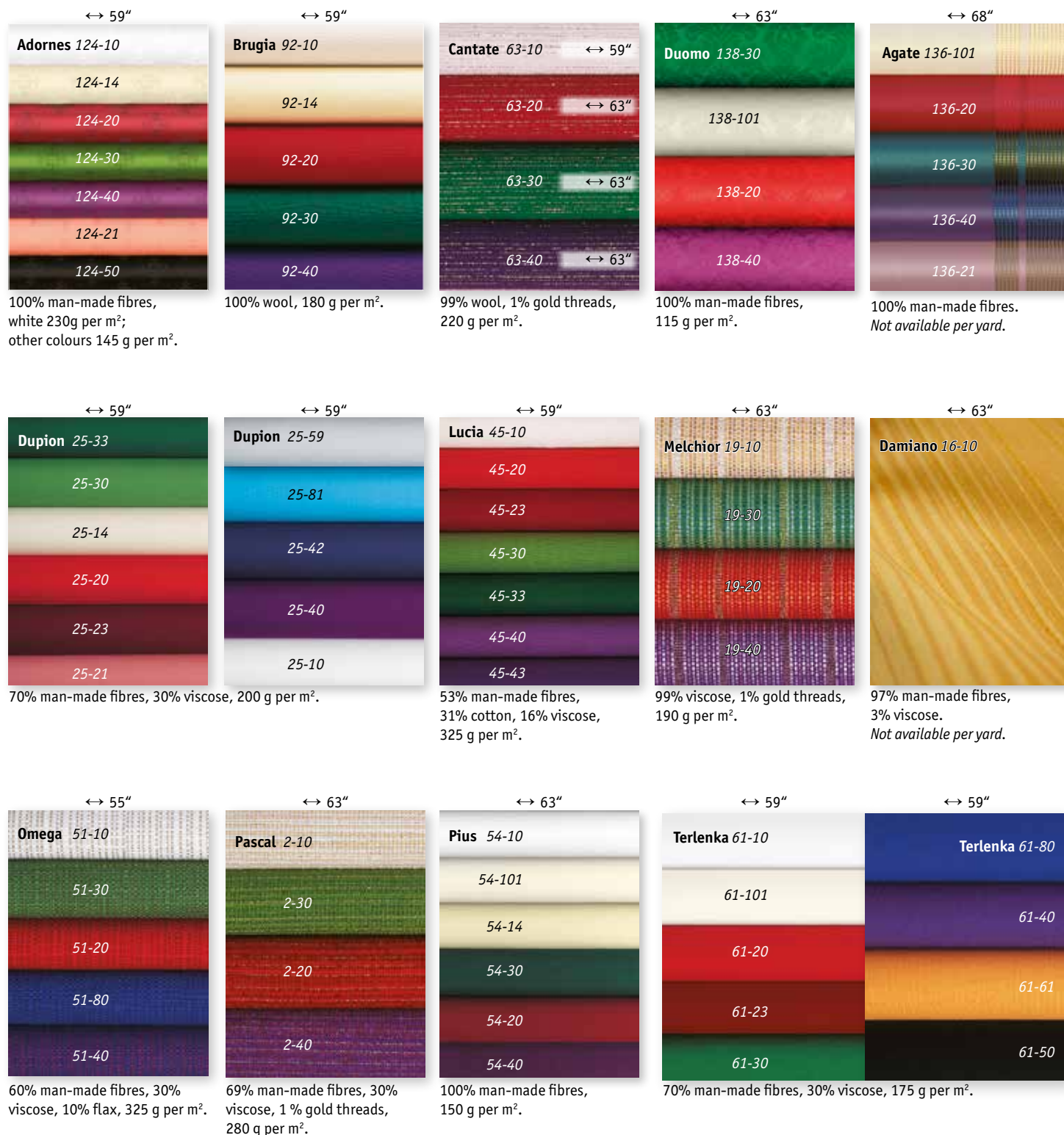
61-61

61-50

70% man-made fibres, 30% viscose,
175 g per m².

Colour references in this catalogue are close to reality, but can't perfectly reflect it; if necessary please ask your sales representative for colour samples. Slabbinnck nv declines any responsibility regarding colour discrepancies.

General information: fabrics for vestments and paraments



Colour references in this catalogue are close to reality, but can't perfectly reflect it; if necessary please ask your sales representative for colour samples. Slabbinck nv declines any responsibility regarding colour discrepancies.

Due to your many requests for an economical collection of vestments, we introduce "Assisi by Slabbinck".

Although not made in the Slabbinck workshop in Belgium, it is manufactured with the same eye for excellence as our other Slabbinck paraments.

Each article is checked for quality by Slabbinck before being shipped.

No custom size nor custom design possible.



701011

701012

701013

701014

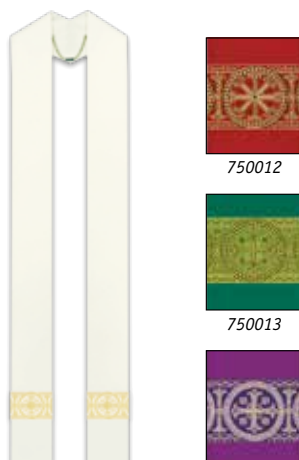


707011

707012

707013

707014



750011

750012

750013

750014



734011

734012

734013

734014

In **Elias** fabric. No custom size nor custom design possible.

701011, 701012, 701013, 701014 Chasuble, with orphrey.

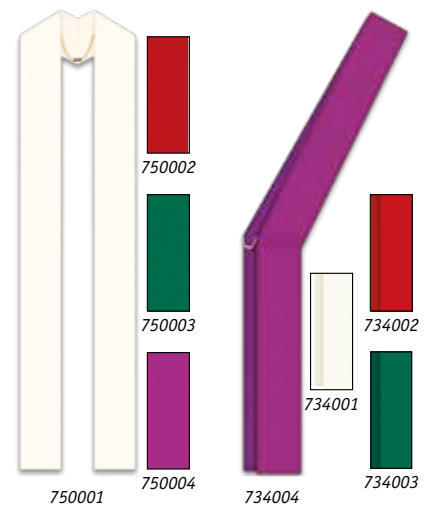
707011, 707012, 707013, 707014 Dalmatic, orphrey on sleeves.

750011, 750012, 750013, 750014 Overlay stole, style 25.

734011, 734012, 734013, 734014 Deacon stole.



* "Assisi by Slabbinck" 10% discount for purchase of 4 chasubles, 4 dalmatics or 4 stoles of the same design (in ecru, red, green and purple colour).



In **Elias** fabric. No custom size nor custom design possible.

701021, 701022, 701023, 701024 Chasuble, with embroidered cross.

701031, 701032, 701033, 701034 Chasuble, with small braid and embroidered cross

701041, 701042, 701043, 701044 Chasuble, with woven band

701051, 701052, 701053, 701054 Chasuble, with orphreys

701001, 701002, 701003, 701004 Plain chasuble.

707001, 707002, 707003, 707004 Plain dalmatic.

Matching:

750001, 750002, 750003, 750004 Plain overlay stole.

734001, 734002, 734003, 734004 Plain deacon stole.

-10%*

* "Assisi by Slabbinck" 10% discount for purchase of 4 chasubles, 4 dalmatics or 4 stoles of the same design (in ecru, red, green and purple colour).

Due to your many requests for an economical collection of vestments, we introduce "Assisi by Slabbinck". Although not made in the Slabbinck workshop in Belgium, it is manufactured with the same eye for excellence as our other Slabbinck paraments. Each article is checked for quality by Slabbinck before being shipped.

No custom size nor custom design possible.



711011



785015

Coat style alb, Off-white.

Reference	Length A-B / Chest C 41" (regular); 45" (large)
711011	55" / 41"
711021	57" / 41"
711031	59" / 41"
711041	61" / 41"
711051	63" / 41"
711061	57" / 45"
711071	59" / 45"
711081	61" / 45"

Cassock Black.

	Neck	Chest	Length	Sleeve
785015 XS - 70	15	40"	58"	33"
785025 S - 71	16	42"	58"	33"
785035 M - 72	16	44"	60"	34"
785045 L - 73	17	46"	62"	35"
785055 XL - 74	18	48"	62"	35"
785065 XXL - 75	19	50"	62"	35"

Matching cassock cincture, custom-made, available.

822 / 131354
04/06/2008



With this QR code you can download, consult and possibly print our price list. Please note that the current prices can always be found on our website.



info@slabbinck.com
www.slabbinck.com